

ADVANCED PROCESS TECHNOLOGY

AT THE HEART OF YOUR PRODUCT



- Soups
- Sauces
- Dips & Dressings
- Salsa
- Mayonnaise
- Confectionary
- Batter
- Houmous

- Creams
- Ointments
- Lotions
- Gels
- Shampoos
- Toothpaste
- Suspensions



- Paints & Resins
- Coatings
- Inks
- Polymers
- Eco/ Bio fuels
- Chemicals
- Bio Recycling



PROCESSES



Dispersion



Homogenisation



Emulsification



Particle Size Reduction



Blending



Solubilisation



Solids Suspension



CONTACT US



AE Mixers Ltd

Trent Industrial Estate, Duchess
Street Shaw, Lancashire, OL2 7UT, UK



+44 (0) 1706 759003



www.aemixers.com



info@aemixers.com



PRECISION MIXING TECHNOLOGY MIXERS OVERVIEW



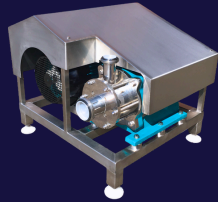
HIGH SHEAR MIXERS

VESSEL MIXERS

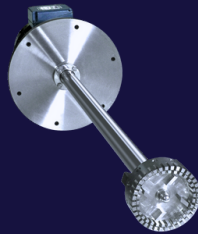
INTEGRATED PROCESS MIXING SYSTEMS



SINGLE STAGE HIGH SHEAR INLINE MIXER
100L/HR TO 180,000L/HR



HIGH SPEED BELT DRIVEN SINGLE STAGE INLINE MIXER
UP TO 40,000L/HR



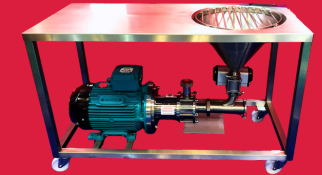
HIGH SHEAR SEALED BEARING MIXER
25L TO 5000L



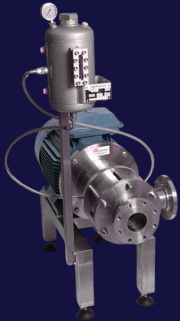
HIGH SHEAR BATCH IMMERSION MIXER
5L TO 12,000L



ADPRO VACUUM PROCESSING MIXER
50L TO 6000L CAPACITY



POWDER / LIQUID MIXERS
UP TO 10,000KG/HR CAPACITY



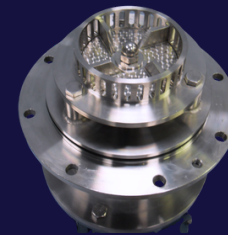
SINGLE STAGE HIGH SHEAR INLINE MIXER
WITH DOUBLE SEAL FOR ARDUOUS DUTY



MULTI-STAGE HIGH SHEAR INLINE MIXER
UP TO FOUR ROTOR STATORS
100L/HR TO 50,000L/HR
(FOR ULTRA FINE MIXING)



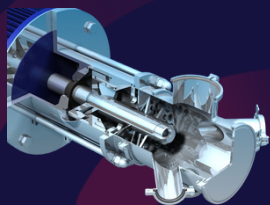
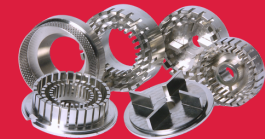
TOP & BOTTOM ENTRY MEDIUM SHEAR DISPERSION MIXER
25L TO 5000L



BOTTOM ENTRY HIGH SHEAR BATCH MIXER
25L TO 15,000L
CAN BE USED WITH VESSEL AGITATOR

ADVANCED ROTOR STATOR TECHNOLOGY

AE Mixers have a comprehensive range of high shear rotor stator mixing heads to efficiently perform your essential processes.



ADPRO SINGLE STAGE HIGH SHEAR TANK BOTTOM MIXER
CAN BE SUPPLIED AS INLINE MIXER



- LOW SHEAR
- HYDROFOIL
- AXIAL FLOW
- PROPELLOR
- ANCHOR
- CO-AXIAL

DESIGNED FOR SPECIFIC PROCESS

ULTRA HYGIENIC IN-LINE MIXER

Designed to EHEDG, FDA and cGMP guidelines, the Advanced UH inline mixer meets with the most stringent pharmaceutical, cosmetic and food industry standards.

